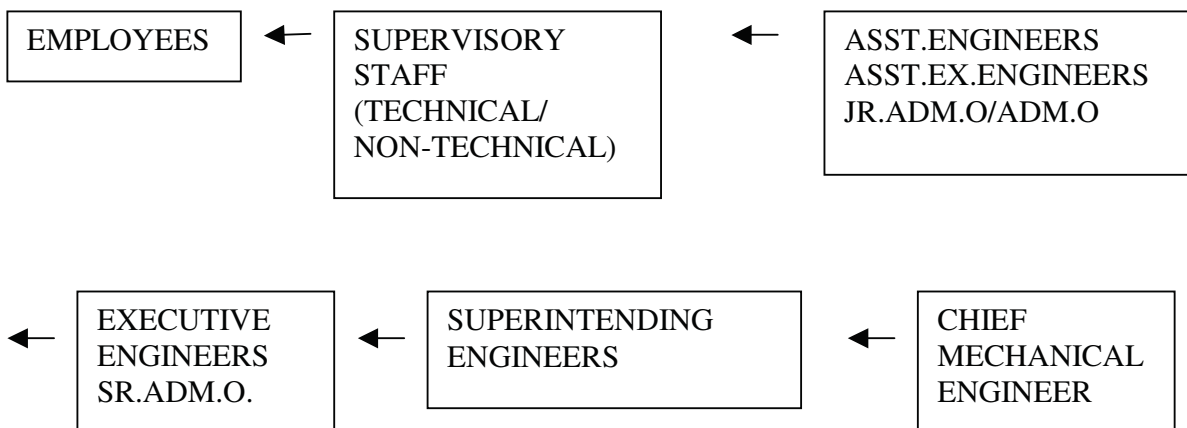


CHANNEL OF SUPERVISION, ACCOUNTABILITY AND DECISION MAKING

ELECTRICAL & MECHANICAL DEPARTMENT.

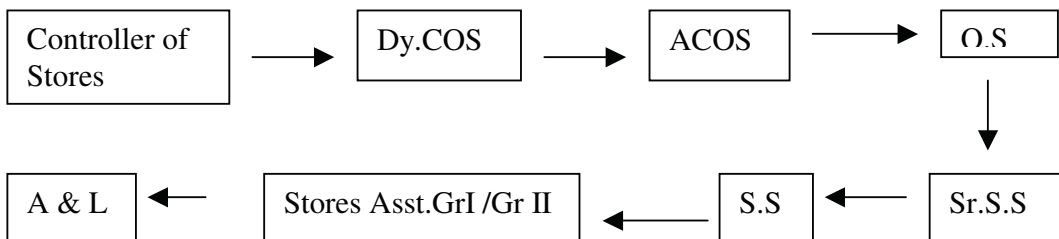
1) Sl.No.(iii): Channel of Supervision, Accountability and Decision making:

a) Channel of Supervision, Accountability:



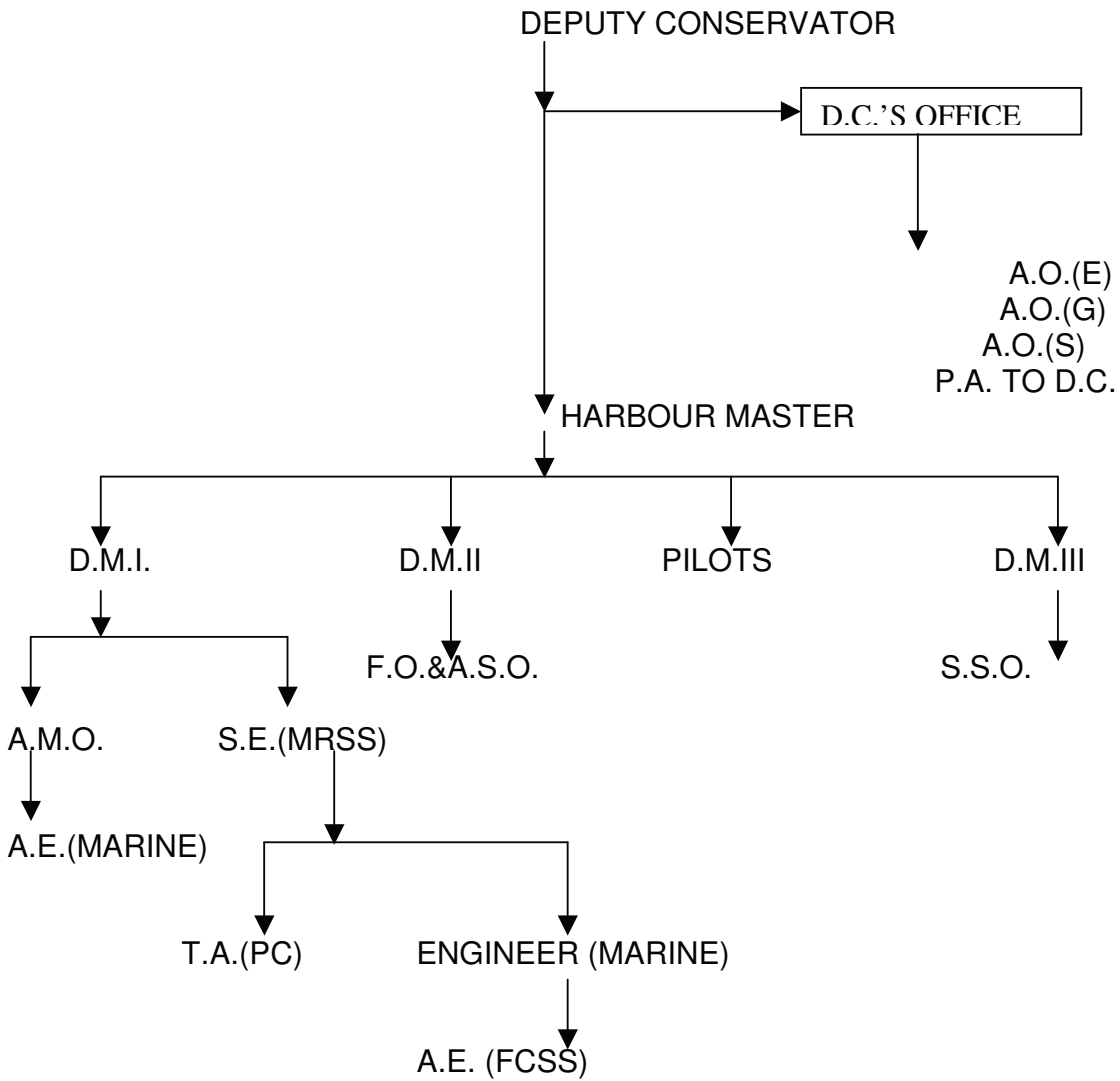
The Supervisory Staff and above are accountable for the activities in their respective area of work . Ultimate decision making authority is Chief Mechanical Engineer.

STORES DEPARTMENT



The Stores Assistant Grade I & II and above are accountable for the activities in their respective work and the ultimate decision making authority is Controller of Stores.

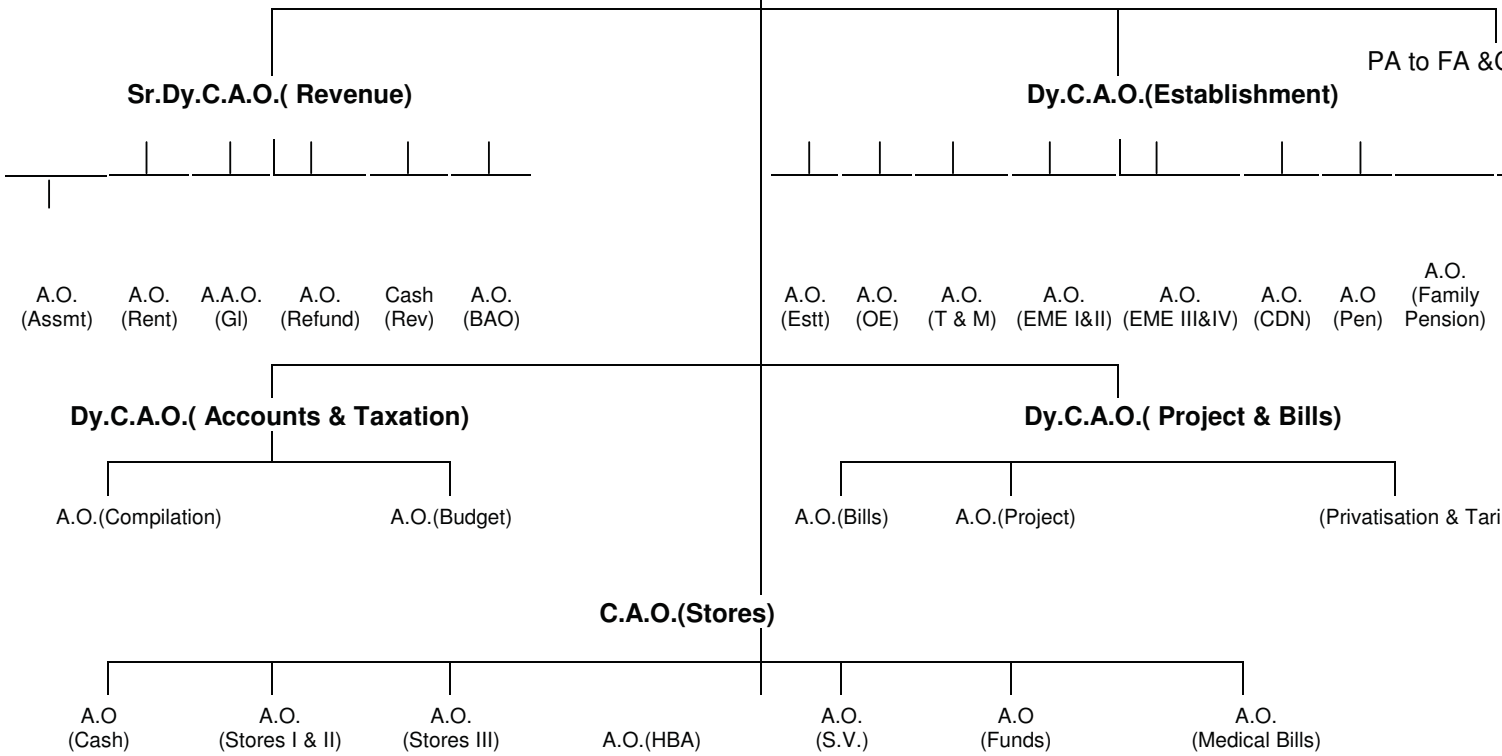
MARINE DEPARTMENT



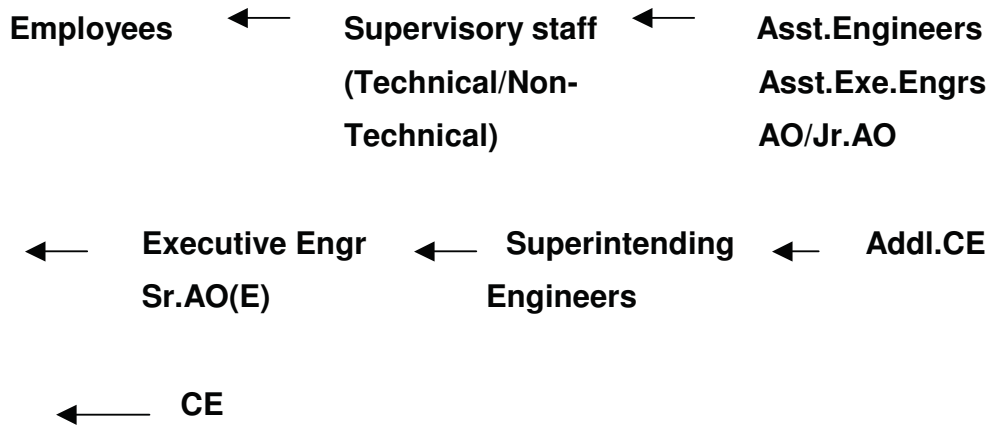
ACCOUNTS DEPARTMENT

FINANCIAL ADVISER & CHIEF ACCOUNTS OFFICER

ADDITIONAL CHIEF ACCOUNTS OFFICER

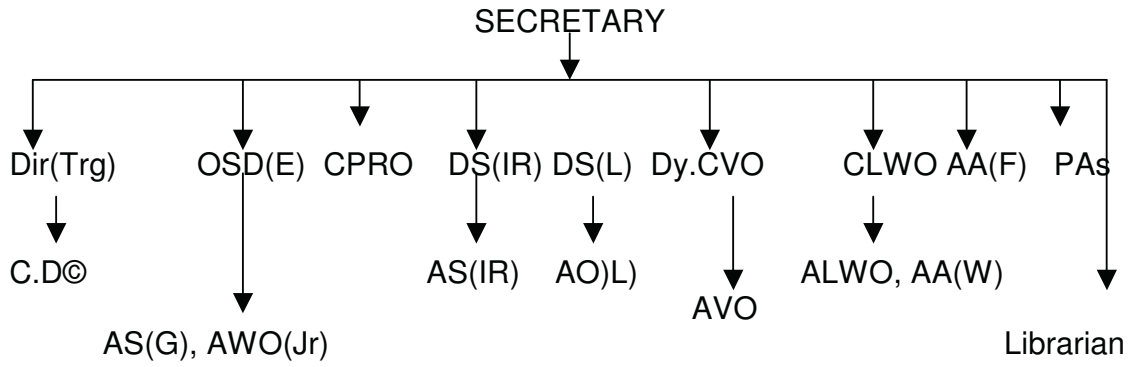


CIVIL ENGINEERING DEPARTMENT

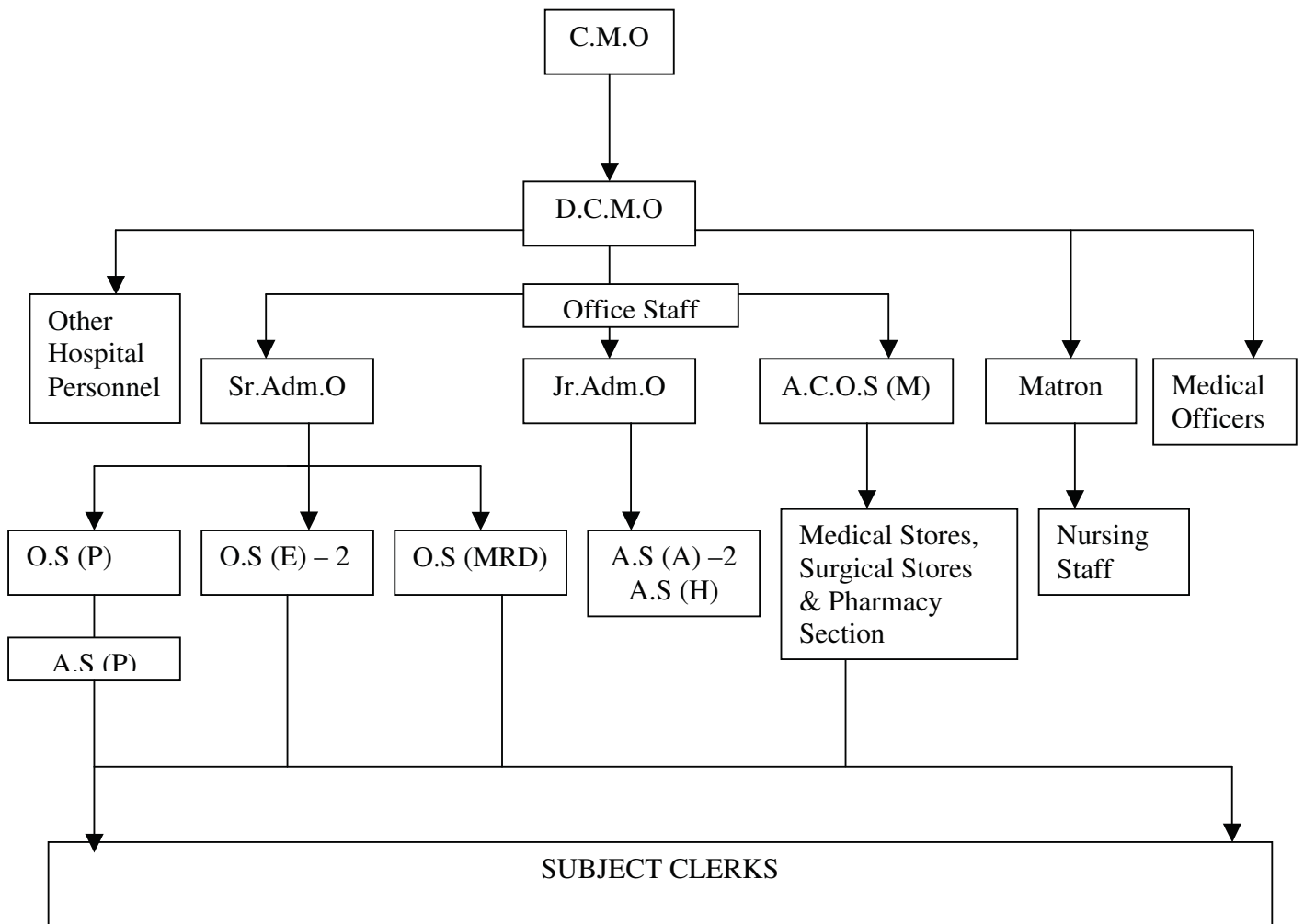


The above Supervisory staff and above are accountable for the activities in their respective area of work. Ultimate decision-making authority is Chief Engineer.

SECRETARY'S DEPARTMENT



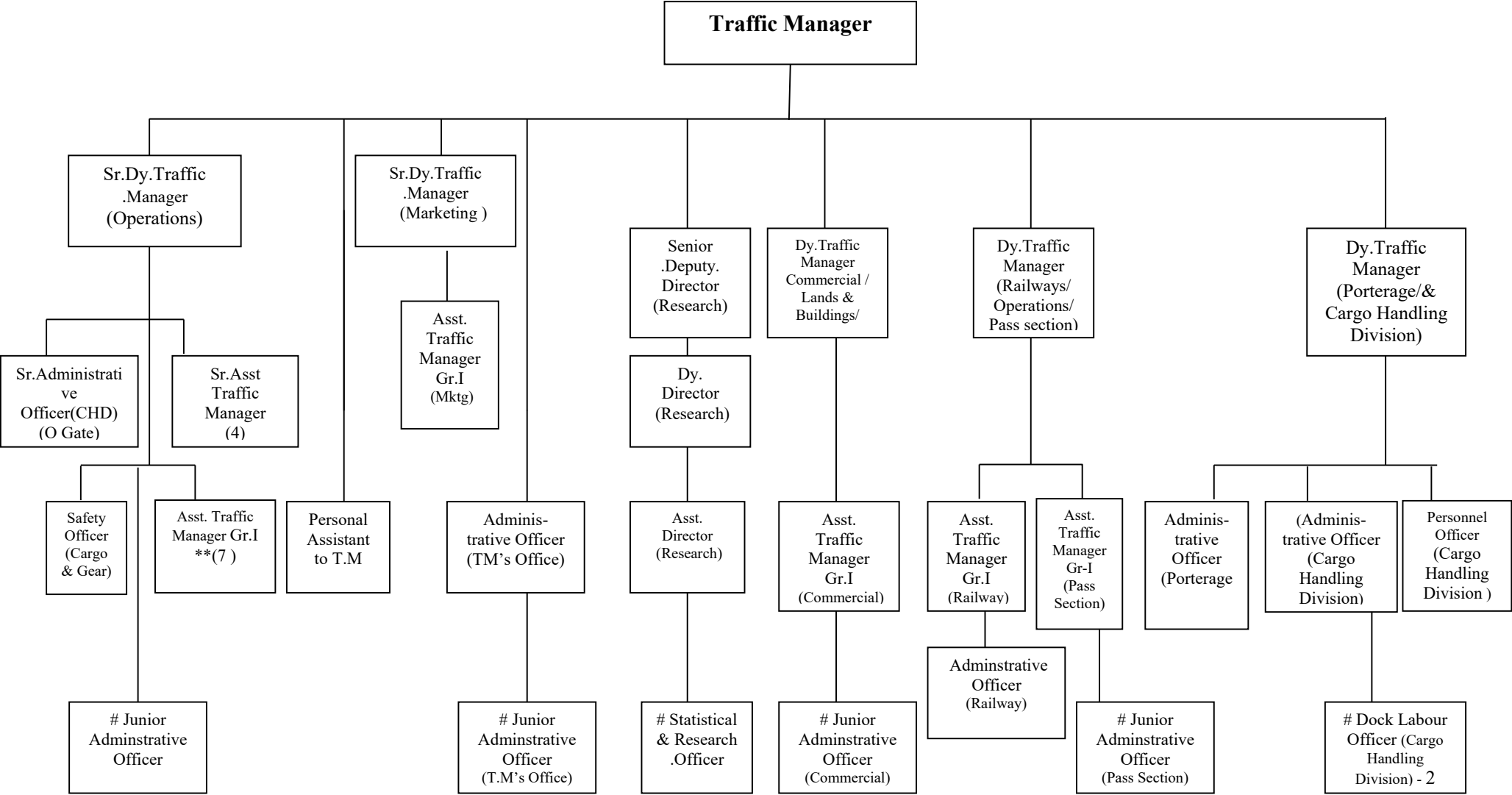
MEDICAL DEPARTMENT



The Supervisory Staff as listed above are accountable for the activities in their respective area of work. Ultimate decision making authority is Chief Medical Officer.

TRAFFIC DEPARTMENT

ORGANISATIONAL STRUCTURE (Class I & II)



** Area I , II, III, IV, III Section & 'O' Gate & Operation Division