

**CIVIL ENGINEERING DEPARTMENT
NO.1 RAJAJI SALAI
CHENNAI - 600 001**

WMA7/3450/2016/E

**BUDGETARY OFFER FOR “Demolishing/Dismantling the ‘A’ type
Quarters Three Blocks from A 331 - A 366 in Tondiarpet Housing
Colony I area.”**

SUBMISSION ON OR BEFORE 30.11.2017

Chennai Port Trust invites budgetary offers for “**Demolishing/Dismantling the ‘A’ type Quarters Three Blocks from A 331 - A 366 in Tondiarpet Housing Colony I area** ”. The Technical specifications are enclosed herewith. Kindly furnish your budgetary offer in the enclosed format and submit the same to the Executive Engineer(MDO), 3rd Floor, Old Administrative Office Building, Civil Engineering Department, Chennai Port Trust, No.1, Rajaji Salai, Chennai - 600001 on or before **30.11.2017**.

CHENNAI PORT TRUST

Name of work : Demolishing/Dismantling the 'A' type Quarters Three Blocks from A 331 – A 366 in Tondiarpet Housing Colony I area.

Budgetary offer for **Demolishing/Dismantling the 'A' type Quarters Three Blocks from A 331 – A 366 in Tondiarpet Housing Colony I area.**

Description of building :

The each building (each block) consists of 3 floors (GF,FF & SF) totally 12 units, with RCC roof slab, RCC sunshade, RCC Staircase, RCC loft, RCC kitchen platform, RCC jally, Wooden doors, Wooden /Glazed/Steel windows, wooden ventilators etc., and Electrical wiring etc.,

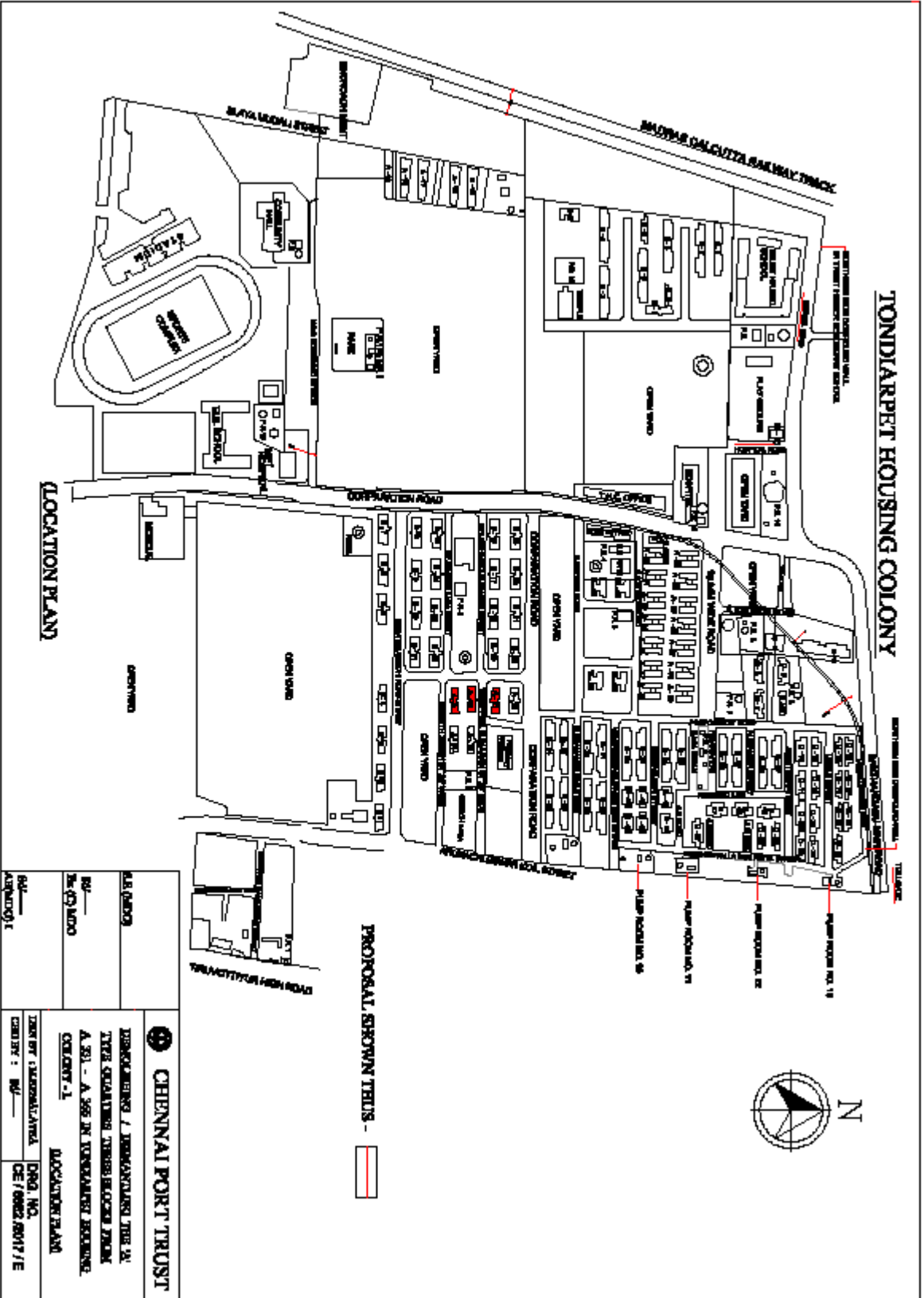
1. Dismantling / Demolishing cost for 'A' type Quarters Three blocks from A 331 – A 366 (36 units) including taking away all useful materials and carting away of the debris anywhere out side the colony. } Rs.

2. Assessed salvageable value of useful Material from 3 blocks of 'A' Type Quarters from A 331 to A 366 (36 Units) Rs.

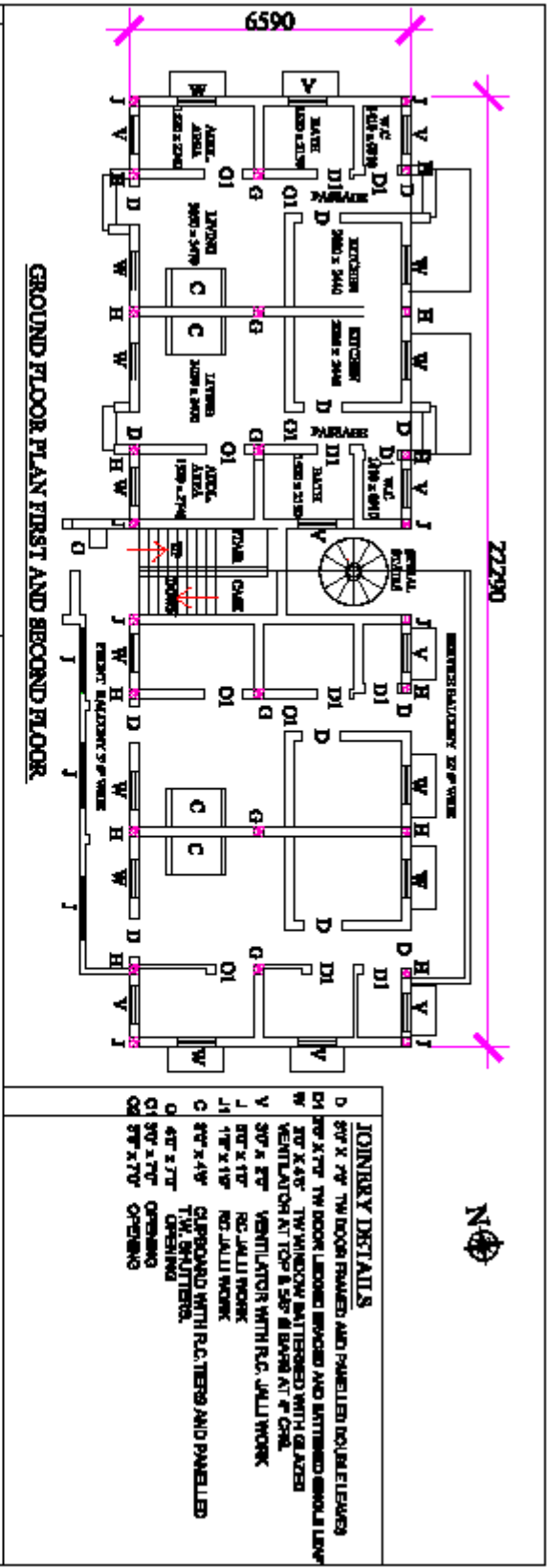
- Note:
1. The site may be inspected before quoting.
 2. Wooden Door/ window/ventilators (indicated in the drawing) may be checked before Offering the budgetary quote.
 3. The tenderer should submit GST Registration details
 4. The rate is inclusive of GST

Authorized Signatory of the firm with seal

TONDARPET HOUSING COLONY



<p>CHENNAI PORT TRUST</p> <p>MEMBERSHIP / REPRESENTATION THIS IS TYPE QUALIFYING MEMBERS/WORKER FROM A.S.I. - A.S.B. IN TONDARPET HOUSING COLONY - A</p> <p>LOCATION: TONDARPET</p>	<p>DATE: 01/01/2018</p> <p>BY: [Signature]</p> <p>FOR: [Signature]</p> <p>APPROVED:</p>
<p>DESIGN BY: [Signature]</p> <p>CHECKED BY: [Signature]</p> <p>DATE: 01/01/2018</p>	<p>DWG. NO. CE/0002/2017/E</p>



JOINERY DETAILS

D	50' x 70' TYP DOOR FRAMED AND PANNELED DOUBLE LEAF
D1	50' x 70' TYP DOOR LEADED BRICKS AND INTERIOR DOUBLE LEAF
W	30' x 40' TYP WINDOW BATTERED AND INTERIOR DOUBLE LEAF VENTILATOR AT TOP & 50' x 50' B BARR AT 4' CHL
Y	30' x 50' VENTILATOR WITH R.C. JALLIWORK
J1	50' x 10' R.C. JALLIWORK
J	50' x 10' R.C. JALLIWORK
C	50' x 40' CLERESTORY WITH R.C. TIES AND PANNELED TYP. SPLITTERS.
O	40' x 10' OPENING
O1	30' x 10' OPENING
O2	50' x 10' OPENING

SPECIFICATIONS

1. FOUNDATION : BRICK JELLY LIME CONCRETE 1:2:4
2. BRICKWORK : CHAMBER BUILT COUNTY BRICKS IN L.M. 1:2 FOR ALL WALLS EXCEPT FOR ALL THE PASSAGE WALL IN BALCONY WHICH WALL BE OF REINFORCED BRICK WORK WITH COUNTY BRICKS IN D.M. 1:4
3. FLOORING (R/F) : 4" THK BRICK JELLY LIME CONCRETE 1:2:4 AND PLASTER WITH 1/2" THK IN.C.M. 1:2.8 THROUGHOUT.
4. FLOORING COVER FIRST & SECOND FLOOR (R.C. SLAB) : 5" THK CEMENT PLASTERING 1:2.8 THROUGHOUT.
5. WEATHERING COURSE : 1/2" THK AVERAGE BRICK JELLY LIME CONCRETE 1:1:2 TWO COURSES OF PLASTER SANDS THROUGHOUT THE BOTTOM COURSE SET DIAGONALLY IN LINE MORTAR 1:2 AND THE TOP COURSE SET SQUARE IN CONCRETE MORTAR 1:4:2 AND THROUGHOUT WITH CONCRETE MORTAR 1:2:4.
6. PLASTERING : 1/2" TO 5/8" THK WITH CEMENT MORTAR 1:2
7. REINFORCED CONCRETE : CEMENT CONCRETE OF MIX 1:2:4 USING 3/8" TO 3/4" BROADEN STONE JELLY

PLUMB AREA	GROUND FLOOR	1480 SQ FT
	FIRST FLOOR	1816 SQ FT
	SECOND FLOOR	1978 SQ FT
AVERAGE PLUMB AREA PER UNIT		863 SQ FT
FLOOR AREA PER UNIT		288 SQ FT

NOTE:

1. THE BUILDING IS A R.C. FRAMED STRUCTURE WITH 9" THK PANEL WALLS.
2. R.C. COLUMNS (R/C) SHOWN IN PLAN ARE OF SIZE 14" x 14" BEAMS OVER DOOR COLUMNS (R/C) ARE OF SIZE 14" x 14" IN FIRST AND SECOND FLOOR LEVEL AND 9" x 12" IN ROOF LEVEL.
3. THE BEAMS OVER COLUMNS (R/C) ARE OF SIZE 14" x 14" IN FIRST AND SECOND FLOOR LEVEL AND 9" x 12" IN ROOF LEVEL.
4. THE BEAMS OF COLUMNS (R/C) ARE OF SIZE 14" x 14" IN FIRST AND SECOND FLOOR LEVEL AND 9" x 12" IN ROOF LEVEL.

<p>CHENNAI PORT TRUST</p> <p>DISCOUNTING / DISCOUNTING THE 'A'</p> <p>17TH QUARTERS, THREE BLOCKS FROM</p> <p>A 351 - A 366 IN TONDIVARPET HOUSING</p> <p>COLONY - 1</p>		<p>DRN BY: MATHALATHA</p> <p>2003.03.</p> <p>REVISION NO. 022.109</p> <p>CB / 6832(6) / 2017 / B</p>
		<p>DESIGNED BY: R/L</p>
<p>REVISION NO.</p>	<p>REVISION NO.</p>	<p>REVISION NO.</p>
<p>REVISION NO.</p>	<p>REVISION NO.</p>	<p>REVISION NO.</p>